

SCANREX 2K GMM E2

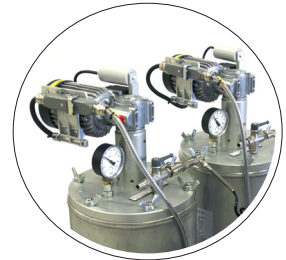
– Two component
precision dispensing



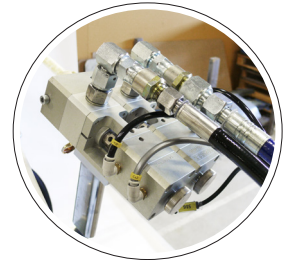
*Outlet manifold
between gear
pumps and mixing
valve. Including
air bleeding
valves, analogue
pressure sensors
and manometers.*



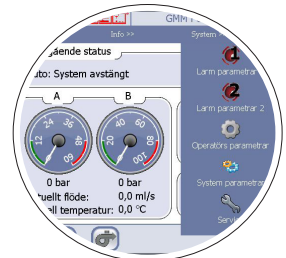
*Agitators on
pressure tanks
(Option)*



2K Mixing valve



Panel



With our customers' needs and our knowledge, a system for measuring, mixing and dispensing of two component materials emerged. The Scanrex 2K GMM E2 is based on our long experience of application of two-component materials. The high quality of our products is a result of continuous product development,

improvement of manufacturing methods and of course our skilled staff. The products are designed and manufactured at our plant, located in Strömstad on the west coast of Sweden. All SCANREX products meet the council directive and are CE marked.

SCANREX 2K GMM E2

– Two component precision dispensing

OPERATION

The system is based on the servo-driven gear pumps where the many different combinations of motors, gears and gear pumps ensures that the system can be configured for most flows and mixing ratios. The system can be adapted to run small shots or large continuous flows.

With an innovative new control system and a user-friendly HMI we move forward the positions of mixing system. The system handles two component materials of low to medium viscosity such as epoxies, polyurethanes and silicones.

The system handles two different driving styles, continuous flow and shots. In continuous driving you set the a flow in ml/s. Starting and stopping is done with the trigger, foot pedal or external signal.

At shots you set the flow rate and shot size and starts dispensing with trigger, foot pedal or external signal, stop occurs when the selected shot volume is reached. At shots, you can set up to three different flows, a start up flow, a running stream and a closing flow. Each driving styles can be saved as a recipe that can easily be loaded via the panel before production. In the recipe, you can also specify a unique recipe mixing ratio. The system handles more than 99 recipes.

Alarm handling

The system has an extensive alarm handling where the user can put most border itself. Several alarm limits can be set in two stages, warning that provides a visual warning and alarm that stops the system. Potlife guard, torque limitation for motors and pressure sensors for A-and B-component is standard.

OPTIONS

- Transport pumps A-/B-component for automatic filling of pressure tanks
- Auto changer for transport pumps (two A- and/or Bcontainers)
- Agitators for pressure tanks and material container
- Custom dimensions of all hoses and pips
- Material batch handling
- Serial number handling
- Auto change of recipe from supervised system
- Advanced productions logging
- Flow meters, close loop for each component

TECHNICAL DATA

| | |
|----------------------------|---|
| Standard machine : | 2 x 30 L pressure tanks without agitators |
| W x L x H approx: | 700 x 1300 x 1670 mm |
| Weight approx: : | 260 kg |
| Pneumatic supply: | 6-7 Bar |
| Air consumption: | <20 l / min |
| Electricity supply: | 380V, 16A / 230V, 10A |
| Max Power: | 1000 W |
| Noise level: | <70 dB (A) |

PERFORMANCE

Configurable flowrates: less than 5 ml/min up to 10 l/min, mixing ratio 100:1.5 - 100:100, dependning of motor/gears/gear pumps combinations and characteristics of the materials.

SELECTION PUMP UNIT

| | |
|--------------------|---|
| Motors: | Servo 400W / 750W |
| Gears: | 10:1, 15:1, 20:1, 30:1 |
| Gear pumps: | from 0,05 cc/rev to 50 cc/rev (standard from 0,3 - 12 cc/rev) |

TANKS/PRESSURE TANKS

| | |
|--------------------------|---|
| Sizes: | from 12 to 90 litres stainless steel/galvanized |
| Material filters: | |

MIXING VALVES

| | |
|-----------|---|
| 190003360 | Two valves, static mixer |
| 194000580 | Single valve "snuff-back", static mixer |

STANDARD FUNCTIONS

- Potlife guard
- Recipe handling
- Pressure monitoring
- Guided cleaning cycle
- Parameters and recipes back-up to USB

SCANREX reserves the right to modify the specifications without prior notice. Id: 2KGMME2001



APPLICATOR SYSTEM AB, Division SCANREX

Prästängsvägen 12
SE-452 33 Strömstad, Sweden
Telephone:+46 31 750 30 00
www.aplicatorgroup.com
info@aplicator.se

Branch offices; Aplicator System AB
Denmark info@aplicator.dk
Finland info@aplicator.fi
Spain info@aplicator.es
U.K info@aplicator.co.uk