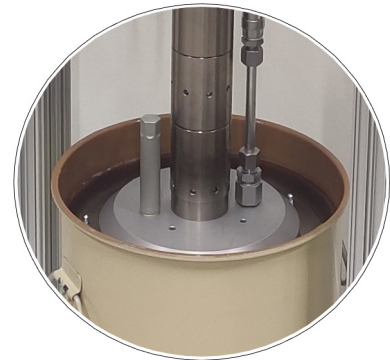
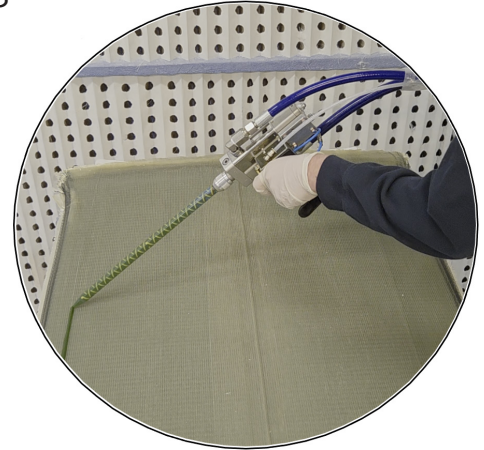


# SCANREX 2K GMM HV

– For application of high viscosity materials



The Scanrex 2K GMM HV is the ultimate solution for precise metering, mixing, and dispensing of two component materials. This advanced system is designed to handle high viscosity materials such as epoxy, polyurethane, silicone and MMA with high accuracy and

efficiency. The system can be configured to suit a wide range of applications with flow rates from 5ml/minute up to 10 litres/minute at continuous flow. The Scanrex 2K GMM HV is a solvent free system.

# SCANREX 2K GMM HV

– For application of high viscosity materials

## SERVO-DRIVEN GEAR PUMPS

The system is based on servo-driven gear pumps where the different combinations of motors and pumps ensures that the system can be configured for most flows and mixing ratios.

## ADVANCED ALARM HANDLING

Ensure safety and reliability with extensive alarm control, including visual warnings and system stops for critical limits. Pot-life guard, torque limitation for motors and pressure sensors for A- and B-component is standard.

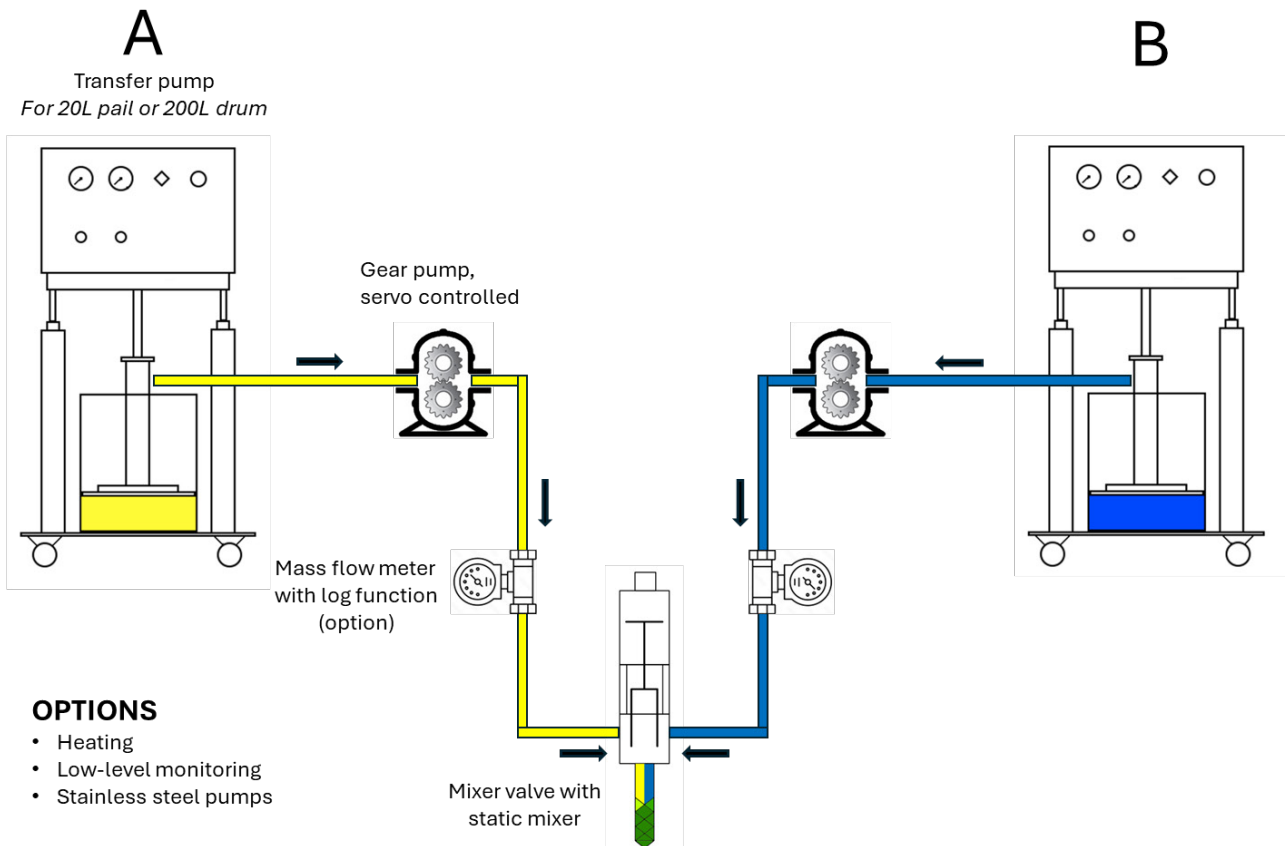
## VERSATILE DISPENSING SYSTEM

The system offers two different driving modes: continuous flow and shot dispensing.

**Continuous flow:** Set the flow rate in ml/s. Start and stop the flow using the trigger, foot pedal, an external signal or control station.

**Shot dispensing:** Set the flow rate and shot size. Dispensing begins with the trigger, foot pedal, or an external signal and stops automatically when the selected shot volume is reached.

Each driving mode can be saved as a recipe for easy access. Recipes can include unique mixing ratios, and the operator can seamlessly switch between the two driving modes as needed.



# SCANREX 2K GMM HV

– For application of high viscosity materials



## STANDARD

HVP200 for 20 litre pail for A- and/or B-component.



## STANDARD

HVP400 for 200 litre drum for A- and/or B-component.



## OPTION

Mass flow meter with log function.



## STANDARD

2K mixer valve with handle (pistol grip).

# SCANREX 2K GMM HV

– For application of high viscosity materials

## STANDARD MACHINE CONFIGURATION

- Bottom plate with wheels
- 2 pcs HVP pumps\*
- Servo-driven metering pumps (gear)
- High pressure hoses PA or PTFE
- 2K Mixer valve with handle (pistol grip)
- 25 pcs plastic static mixers, adapted for specific material
- Control system with functions such as;
  - Recipe handling
  - Pot-life guard
  - Pressure monitoring
  - Purge
- FAT (Factory Accept Test) with actual material is always executed before delivery.

*Adapted for 310ml cartridge/sausage, 20L pail or 200L drum.*

## TECHNICAL DATA

<b>Mixing ratio:</b>	100:10 to 100:100
<b>Capacity:</b>	up to 10 litres/minute
<b>Motors:</b>	Servo 400W / 750W
<b>Gears:</b>	10:1, 15:1, 20:1, 30:1
<b>Gear pumps:</b>	from 0,05 cc/rev to 50 cc/rev (standard from 0,3 - 12 cc/rev)
<b>WxLxH approx. (stand. config.):</b>	800 x 1200 x 1670 mm
<b>Weight approx. (stand. config.):</b>	300 kg
<b>Pneumatic supply:</b>	6-7 Bar
<b>Air consumption:</b>	<20 l / min
<b>Electricity supply (stand. config.):</b>	230 VAC 50Hz, 16A

## OPTIONS

- Heating system
- Low-level monitoring
- Swing arm with balance block
- Foot pedal for start/stop of mixer valve
- Stainless steel pumps
- Adaptation for integration with a supervisory system
- Mass flow meters
- Log function for;
  - Mass flow
  - Date
  - Recipe name
  - Flow
  - Mixing ratio (mass flow meters)
  - Alarms
  - Pressure
  - Temperature (for heating system)
  - Batch number

*All data and characteristics mentioned in this booklet are by way of example only. Given flow capacities and material pressure are depending of; inlet air pressure, material viscosity, the hose dimensions and other equipment fitted after the pump outlet. Applicator Group reserves the right to modify the products without prior notice.*