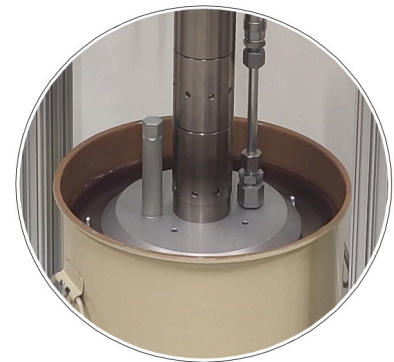


SCANREX HVP 200

– One Component System



The HVP 200M is a mobile pump with two big wheels and handles for easy movement.



Pneumatic controlled material valve as option.

The HVP 200 is an air driven double-acting piston pump for pumping, dosing and application of high viscosity material direct from 20 litre delivery container. The machine is used for pumping different kinds of glue, sealing compounds and grease.

The HVP 200 is a versatile machine that easily can be adapted for many different dispensing situations; from manual dispensing to automated dispensing stations where the material is dispensed with a robot or actuator tables.

SCANREX HVP 200

– One Component System

STANDARD EQUIPMENT ON HVP 100, 200 AND 400

- Pump frame with control box
- Container lifter Two-hand control
- Air bleeding valve for the pump body
- Air hose connection int R 3/8"
- Material hose connection int R 1/2"
- Shaft sealing PTFE
- O-rings VITON
- Sleeve (pressure plate) NEOPREN
- Pump shaft Hard chromed steel
- Ventil seat/cone Hardened tool steel
- Pressure plate for 20-25 litres material container

ACCESSORIES HVP 200

- Material pressure regulator
- Material valves
- Material dosers
- Outlet block with manometer
- High pressure material hose PA or PTFE.
- Pneumatic control unit for the material valve:
- *Foot pedal-pistol handle-solenoid valve*
- Pressure transducer on pneumatic and material system
- Alarm for empty material container
- Programmable PLC unit

All data and characteristics mentioned in this booklet are by way of example only. Scanrex reserves the right to modify the products without prior notice.

VARIANT CONFIGURATION OF HVP 200

- Pump body of stainless and acid proof steel.
- Valve seat/cone of hard metal.
- Different materials for the pressure plate sleeve:
EPDM-NITRIL-PTFE-VITON-VULKOLAN

TECHNICAL DATA

Material pressure max:	210 Bar	330 Bar
Pressure ratio:	35:1	55:1
Air consumption l/minute.	150 l/min	200 l/min

at 6 bar and 20 double strokes.

Air pressure max:	6 Bar
Capacity:	Up to 700ml/minute

Measurements/Weight:	
Floor space, width x length:	640 x 450 mm
Height min/max:	1120/1610 mm
Height material container max:	400 mm
Material container std:	20 litres
Weight std pump:	app. 60 Kg
Noise level:	<70 dB (A)